



**KENYA  
ROADS  
BOARD**

# **ROADS BOARDS: THE KENYAN EXPERIENCE**

**PRESENTED**

**AT THE**

**FIRST AFRICAN CONFERENCE ON ROAD  
MAINTENANCE FUNDS**

**LIBREVILLE, 15<sup>TH</sup> TO 18<sup>TH</sup> DECEMBER 2003**



# **KENYA ROADS BOARD**

## **OVERVIEW**

- **BACKGROUND**
- **BOARD OF DIRECTORS**
- **MANDATE**
- **ROAD AGENCIES**
- **KRB'S SECRETARIAT**
- **FUNDING**
- **ROAD NETWORK**
- **CHALLENGES**

# BACKGROUND

- **Kenya's Location: East Coast of Africa**
- **Population: 30 million**
- **Per Capita income: 300 US \$**
- **In June 1992, GOK organized a RMI Policy Seminar**
- **1993/94 Road Maintenance Levy Fund (RMLF) established – Collections have risen from 20 million US \$ in 1993/94 to 100 million US \$ in 2002/03**

## ...../BACKGROUND

- **1994-98 GOK assisted by EU undertook Road Sector Institutional Study**
- **Study Recommended the establishment of an executive Roads Board**
- **In 1999, KRB established by Act of Parliament**
- **KRB Operationalized in July 2000**
- **CEO Reported in October 2001, and by July 2002 most of the secretariat Staff had reported**



# **KENYA ROADS BOARD**

## **KRB'S BOARD OF DIRECTORS**

- **KRB has 13 Directors, 8 from Private and 5 from Public Sectors**
- **Chairman is from among Private Sector Directors**

### **PRIVATE SECTOR ORGANIZATIONS THAT NOMINATE DIRECTORS:**

- 1. Institution of Engineers of Kenya**
- 2. Automobile Association**
- 3. Institute of Surveyors of Kenya**



**KENYA  
ROADS  
BOARD**

...../ **KRB'S BOD**

4. **Kenya Association of Manufacturers**
5. **Kenya Association of Tour Operators**
6. **Institute of Certified Public Accountants**
7. **Kenya Transport Association**
8. **League of Women Voters**



# **KENYA ROADS BOARD**

## **...../ KRB'S BOD**

### **PUBLIC SECTOR ORGANIZATIONS (MINISTRIES) THAT NOMINATE DIRECTORS:**

- 1. Roads, Public Works and Housing**
- 2. Finance**
- 3. Local Government**
- 4. Transport and Communications**
- 5. Foreign Affairs (regional development docket)**



# KENYA ROADS BOARD

## KRB'S MANDATE

### OBJECT AND PURPOSE

- ***To oversee the road network in Kenya and thereby co-ordinate its development, rehabilitation & maintenance and to be the principal advisor to the Government on all matters related thereto.***





# KENYA ROADS BOARD

## ...../KRB'S MANDATE

### KRB'S MAIN FUNCTIONS:

- Co-ordinate implementation of road development, rehabilitation and maintenance policy
- Co-ordinate physical road network development, rehabilitation and maintenance
- Administer the Road Maintenance Levy Fund
- Determine the allocation of Financial resources to Road Agencies



# KENYA ROADS BOARD

## ...../KRB'S MANDATE

### KRB'S MAIN FUNCTIONS (contd.):

- Monitor operations and activities of Road Agencies through technical, financial and performance Audits
- Ensure compliance by Road Agencies with guidelines and criteria set out by the Board
- Recommend levels of Road User Charges
- Advise Minister on R&D, Specifications, Standards, Classification of Roads, types, sizes and usage of vehicles, and Human Resource development



# **KENYA ROADS BOARD**

## ...../KRB'S MANDATE

### **SUMMARY OF MANDATE:**

- Oversight (Planning, Technical & Performance Audits)
- Fund Administration (Disbursement & Financial Audits)



**KENYA  
ROADS  
BOARD**

# KRB'S VISION

***“to be the leader in the management of road network for social economic development”***



**KENYA  
ROADS  
BOARD**

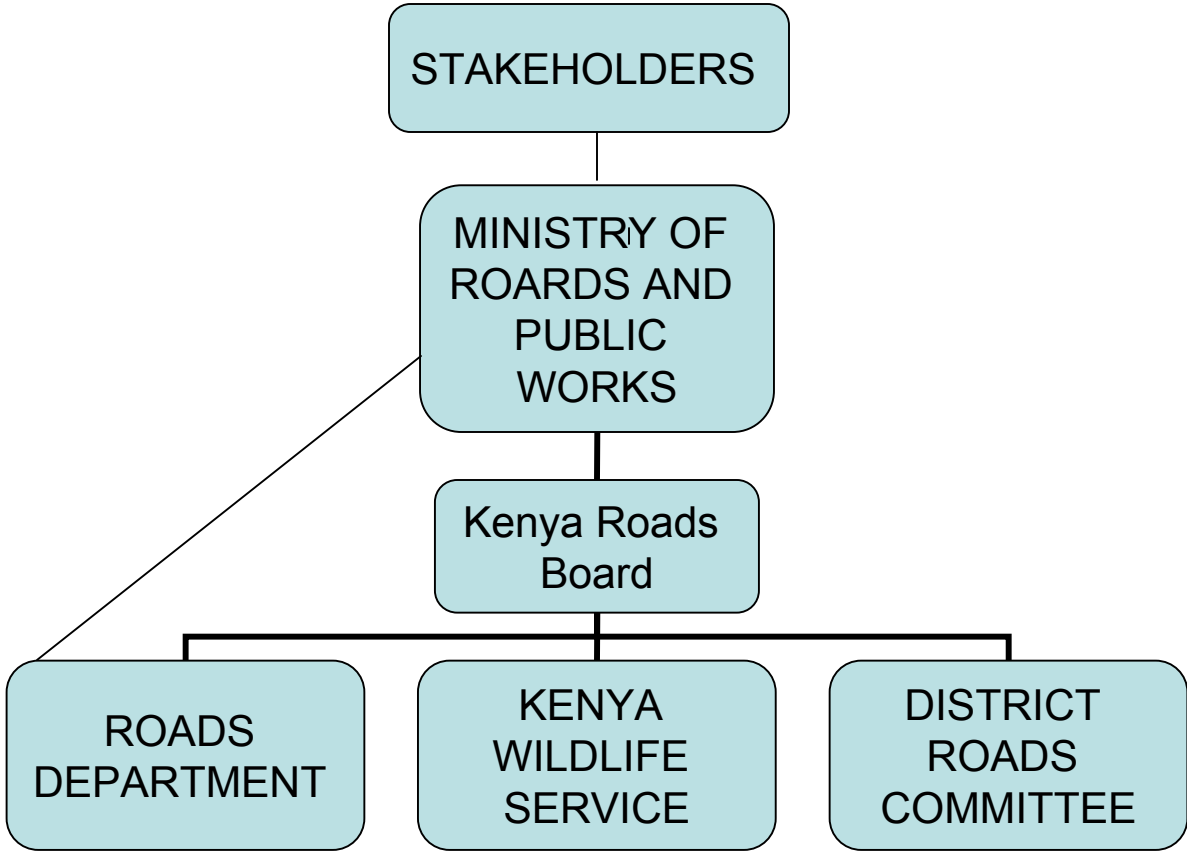
# **KRB'S MISSION**

***“ to ensure provision of a safe, efficient, environmentally friendly and sustainable road network through sourcing and optimal utilization of resources to the satisfaction of stakeholders”***



# ROAD AGENCIES

**KENYA  
ROADS  
BOARD**





# KENYA ROADS BOARD

## ...../ROAD AGENCIES

- **ROADS DEPARTMENT IN MORP&H**
  - Responsible for Class A, B, & C Roads
  - Uses 57% of RMLF
  
- **KENYA WILDLIFE SERVICE**
  - Responsible for Roads in National Parks and Reserves
  
- **DISTRICT ROADS COMMITTEES (DRCs)**
  - Responsible for D,E & Other Roads
  - Uses 16% and in future 24% of RMLF



# **KENYA ROADS BOARD**

## ...../ROAD AGENCIES

### **MEMBERSHIP OF DRCs:**

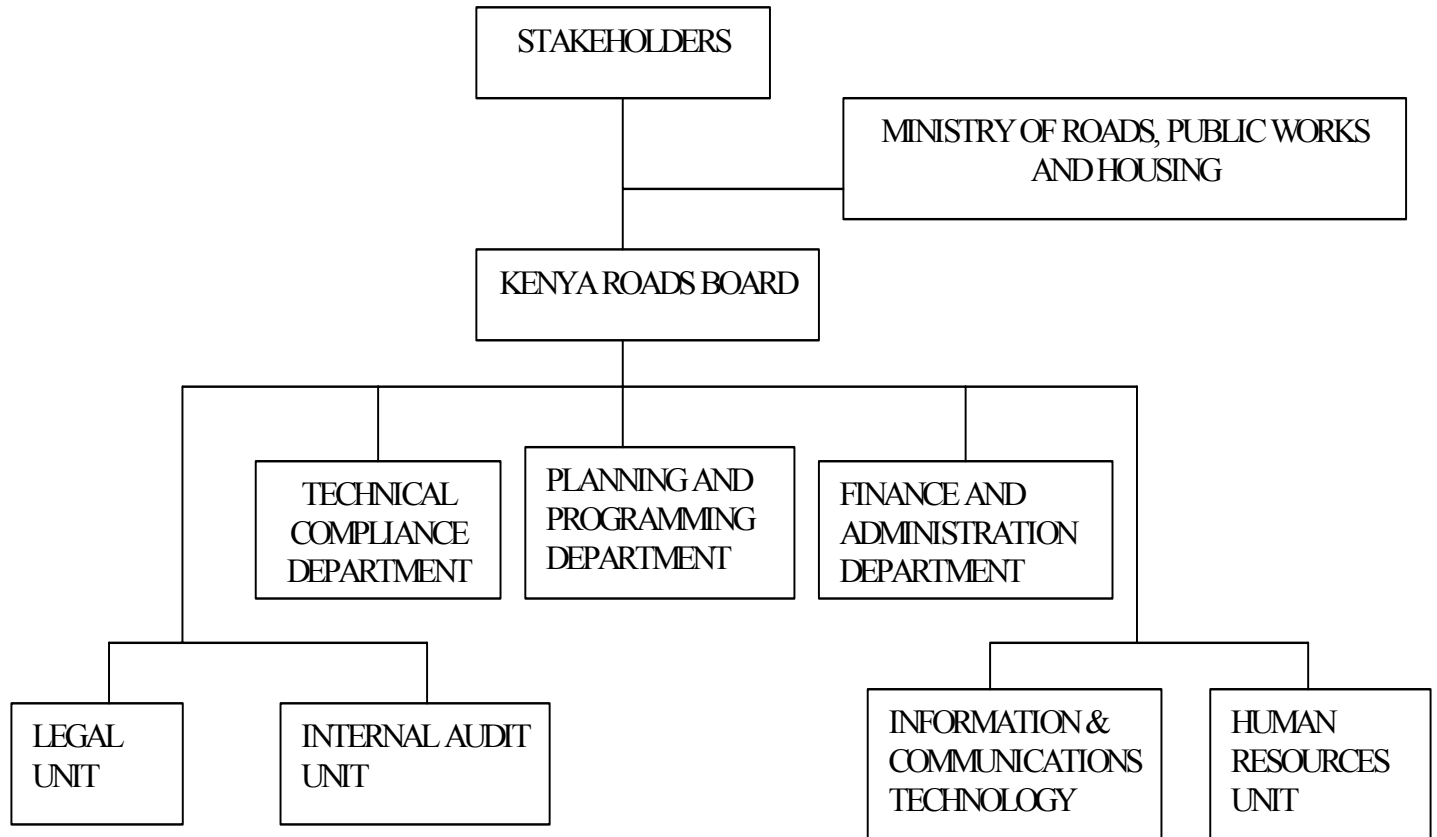
- **All members of Parliament (MPs) from the district**
- **The Chairman or Mayor of every Local Authority in the District**
- **The District Commissioner of the District**
- **The District Roads Engineer in charge of the District**
- **Two other members co-opted by the Committee to represent special interests**





# KENYA ROADS BOARD

## KRB'S SECRETARIAT





**KENYA  
ROADS  
BOARD**

## **ROLE OF KRB'S SECRETARIAT**

- Issuance of ceilings to Road Agencies
- Consolidation of Road Agency Work Plans in the Annual Public Roads Programme
- Disbursement of Funds
- Undertaking Audits – Technical, Performance and Financial



# KENYA ROADS BOARD

## ...../ SECRETARIAT'S ROLE

- Regularly informing stakeholders on the application of RMLF
- Liaison with Development Partners for more funding
- Development of a Road sub-sector Strategy and a Road investment Programme

# Sources of Funding for Road Network

<b>SOURCE</b>	<b>AMOUNT 2003/04 Financial Year (US \$ Millions)</b>
ROAD MAINTENANCE LEVY FUND	<b>110</b>
EXCHEQUER ALLOCATIONS TO MORPW&H	<b>108</b>
LOCAL AUTHORITY TRANSFER FUND	<b>8</b>
<b>TOTAL</b>	<b>226</b>

# EXTENT OF CLASSIFIED ROAD NETWORK

Road Class	Bitumen	Gravel	Earth	Total	%
A International Trunk Roads	2,886	717	152	3,755	6%
B National Trunk Roads	1,433	815	524	2,799	4%
C Primary Roads	2,487	3,209	1,972	7,668	12%
D Secondary Roads	1,167	6,484	3,565	11,217	18%
E Minor Roads	751	7,206	18,592	26,549	42%
Special Purpose Roads	214	8,724	2,366	11,304	18%
<b>Totals</b>	<b>8,938</b>	<b>27,155</b>	<b>27,171</b>	<b>63,292</b>	<b>100%</b>
Percentage (%)	14%	43%	43%	100%	100%

# Approximate extent of unclassified road network

ROAD NETWORK /ADMINISTERING AGENCY	ROAD TYPE	KMS	%
<b>Urban Road Network</b>			
Municipal Authorities	Adopted urban streets	7,000	8.1%
<b>Other Unclassified Roads</b>			
Country Councils	Rural roads and tracks	63,200	72.6%
Kenya Wildlife Service	Roads in National Parks Roads in National Reserves subtotal	6,000 2,800 8,800	10.1%
Forest Department	Forest roads	8,000	9.2%
<b>Total unclassified road network</b>		<b>87,000</b>	<b>100%</b>



**KENYA  
ROADS  
BOARD**

## **CONDITION OF ROAD NETWORK**

- **Road Inventory and Condition Study currently ongoing**
- **Meanwhile about 60% of Classified Network is estimated to be in a maintainable condition**
- **40% of classified network requires rehabilitation before it can be put under maintenance**
- **Condition of unclassified roads not well known but they are not any better than the classified**



**KENYA  
ROADS  
BOARD**

## **CHALLENGES**

- **Huge funding Gap:**
  - **Backlog Maintenance (1 billion US \$, one-off)**
  - **Routine and Periodic Maintenance (150 to 200 million US \$, annually)**
- **Completion Institutional Reforms**





**KENYA  
ROADS  
BOARD**

## ...../CHALLENGES

- **Over commitment of the RMLF**
- **Overloading by Heavy commercial Vehicles**
- **Risk Management**
- **Development of modern Road Management System**
- **Maintaining an up to date Road inventory**



**KENYA  
ROADS  
BOARD**

**THANK YOU**