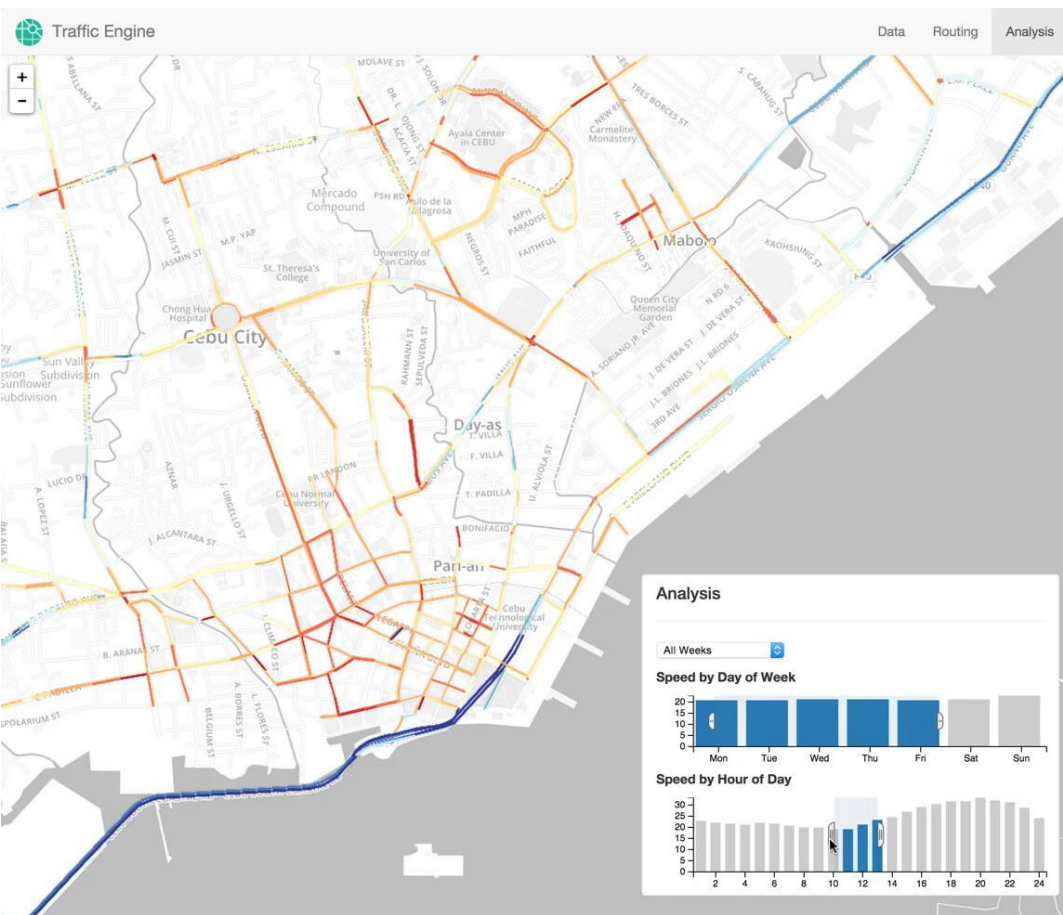


# Demonstration of DRIVER for the Observatory Workshop, Abuja, July, 2018

- <https://www.roadsafety.gov.ph>
- Internet is too slow- so showign how it looks anyway.

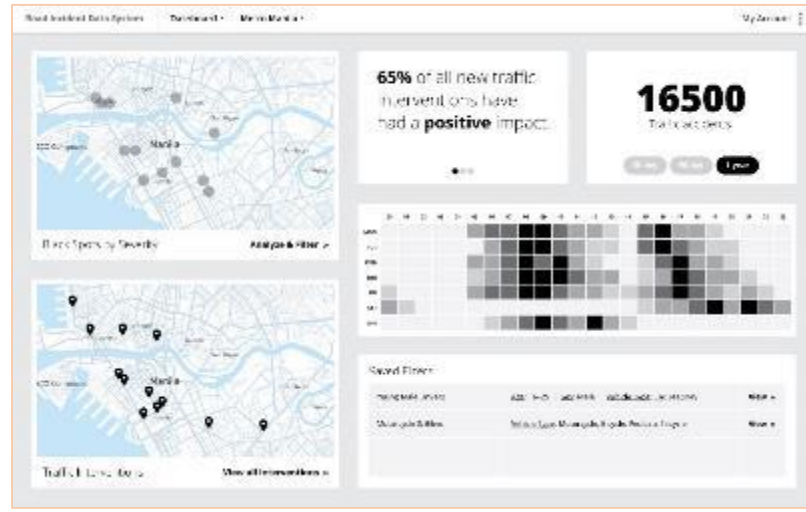


## ROAD INCIDENT DATA SYSTEM Incident Reporting

The Philippine Incident Reporting app allows for in-the-field data entry into the Road Incident Data System to capture reports.

**Sign-in to account**

**Contact DOST Support**



# Data for road incident visualization evaluation & reporting



- The World Bank
- The Korean Green Growth Trust Fund
- DOTC -
- GrabTaxi
- Azavea
- Conveyal
- Cambridge Systematics

# A Quick Overview

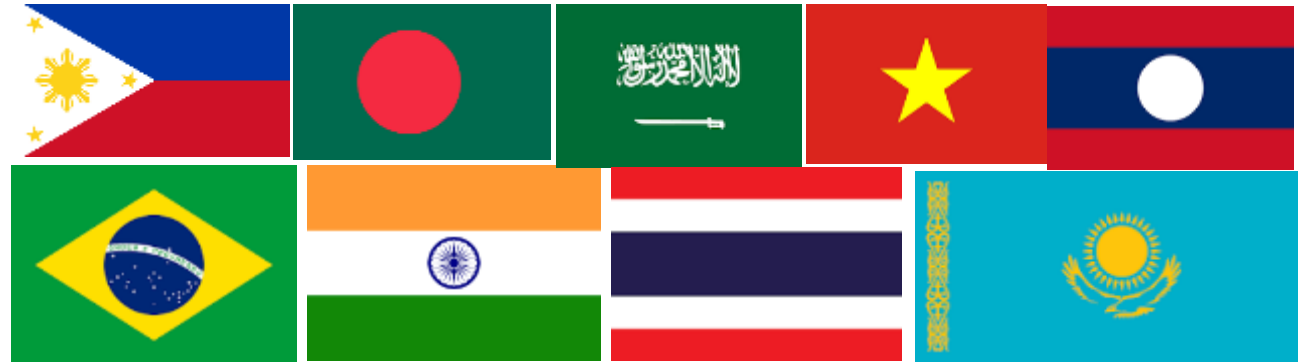
## What?

- DRIVER – **D**ata for **R**oad **I**ncident **V**isualization, **E**valuation, & **R**eporting
- Web-based and open-source system for geo-spatially recording & analyzing road crashes
- A way to link multiple agencies working with road crash data
- A means to standardize terms & definitions for reporting crash data
- A suite of analytical tools to support evidence-based investments & policies & a platform for monitoring the impact of interventions

## How/Why?

- Available for free on Bank's open-source code repository: <https://github.com/WorldBank-Transport/DRIVER>
- Available wherever Open Street Map is available
- Fields/variable easily modifiable
- Can be adapted and maintained by local developer – much cheaper than proprietary systems

## Who?





Black Spots by Severity

[Analyze & filter »](#)



Incidents: Last Two Weeks

[View all incidents »](#)

# ₱336,180,000

Total economic loss and societal harm: Last 90 days

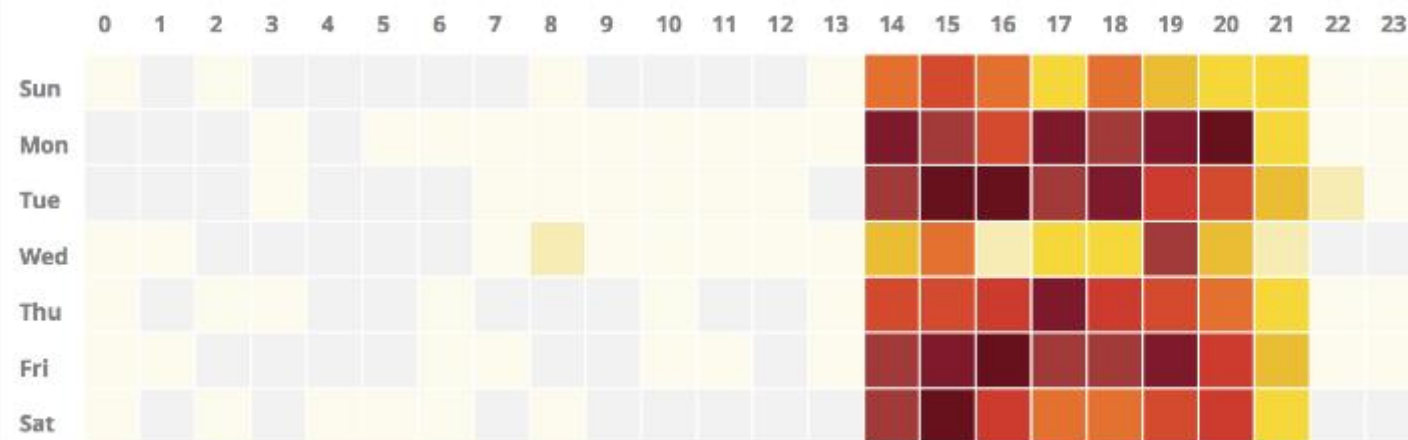
# 371

Incidents

**30 Days**

90 Days

365 Days



### Saved Filters

*No filters have been saved*

DATE & TIME	SEVERITY	MAIN CAUSE	COLLISION TYPE	DESCRIPTION	
8/27/13 12:00 AM	Property damage only	Human error	Side swipe	VEHILCE LOST CONTROL...	<a href="#">View</a> <a href="#">Edit</a>
11/10/13 12:00 AM	Serious injury	Human error	Hit pedestrian	V1 ACCIDENTALLY HIT/B...	<a href="#">View</a> <a href="#">Edit</a>
11/10/13 12:00 AM	Fatal	Human error	Hit object in road	V1 TRAVELING TOWARD ...	<a href="#">View</a> <a href="#">Edit</a>
12/9/13 12:00 AM	Minor injury	Human error	Hit object off road	VEHICLE HIT OBJECT ...	<a href="#">View</a> <a href="#">Edit</a>
11/9/13 12:00 AM	Serious injury	Human error	Hit pedestrian	V1 AND V2 WERE TRAVE...	<a href="#">View</a> <a href="#">Edit</a>
11/1/13 12:00 AM	Minor injury	Human error	Side swipe	V1 TRAVELING NORTH D...	<a href="#">View</a> <a href="#">Edit</a>
9/1/13 12:00 AM	Minor injury	Human error	Side swipe	V1 TRAVELING TOWARD ...	<a href="#">View</a> <a href="#">Edit</a>
12/9/13 12:00 AM	Fatal	Human error	Head on	V1 HEADING WEST AND ...	<a href="#">View</a> <a href="#">Edit</a>
12/21/13 12:00 AM	Fatal	Human error	Overturned vehicle	V1 IN FRONT OVERTURN...	<a href="#">View</a> <a href="#">Edit</a>
8/23/13 12:00 AM	Minor injury	Human error	Right angle	V2 ACCIDENTALLY HIT/B...	<a href="#">View</a> <a href="#">Edit</a>
8/6/13 12:00 AM	Property damage only	Vehicle defect	Rear end	V2 HIT/BUMPED THE RE...	<a href="#">View</a> <a href="#">Edit</a>
11/13/13 12:00 AM	Property damage only	Human error	Side swipe	V1 AND V2 WERE TRAVE...	<a href="#">View</a> <a href="#">Edit</a>
12/5/13 12:00 AM	Fatal	Vehicle defect	Head on	V1 AND V2 WERE TRAVE...	<a href="#">View</a> <a href="#">Edit</a>
12/13/13 12:00 AM	Property damage only	Human error	Side swipe	V1 AND V2 WERE TRAVE...	<a href="#">View</a> <a href="#">Edit</a>
12/20/13 12:00 AM	Serious injury	Human error	Hit pedestrian	V1 ACCIDENTALLY HIT/B...	<a href="#">View</a> <a href="#">Edit</a>
12/6/13 12:00 AM	Minor injury	Human error	Side swipe	V1 AND V2 WERE TRAVE...	<a href="#">View</a> <a href="#">Edit</a>



Filter by name, keyword

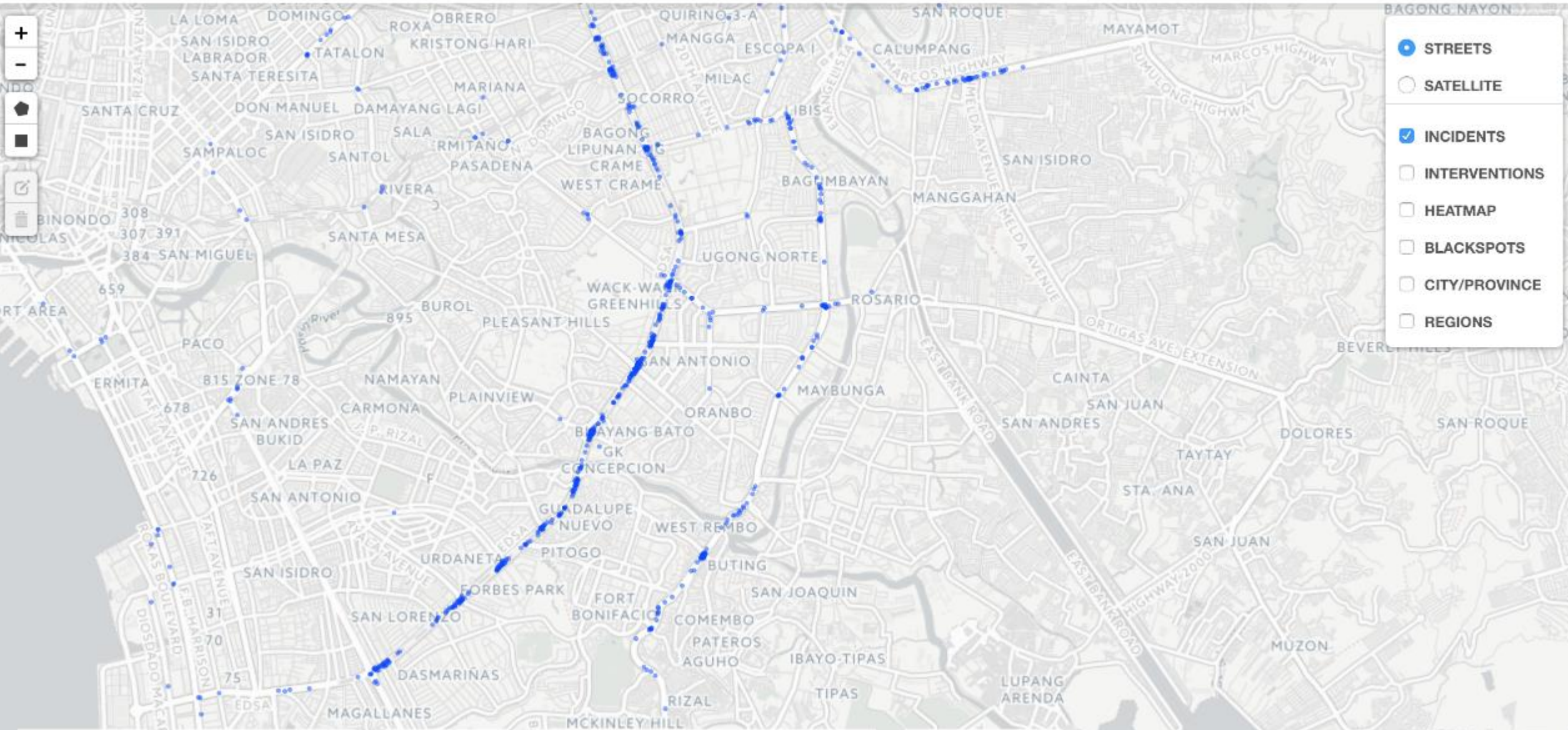
Date Range

Vehicle type

Reporting Agency

Main cause

Severity



- STREETS
- SATELLITE
- INCIDENTS
- INTERVENTIONS
- HEATMAP
- BLACKSPOTS
- CITY/PROVINCE
- REGIONS



Filter by name, keyword

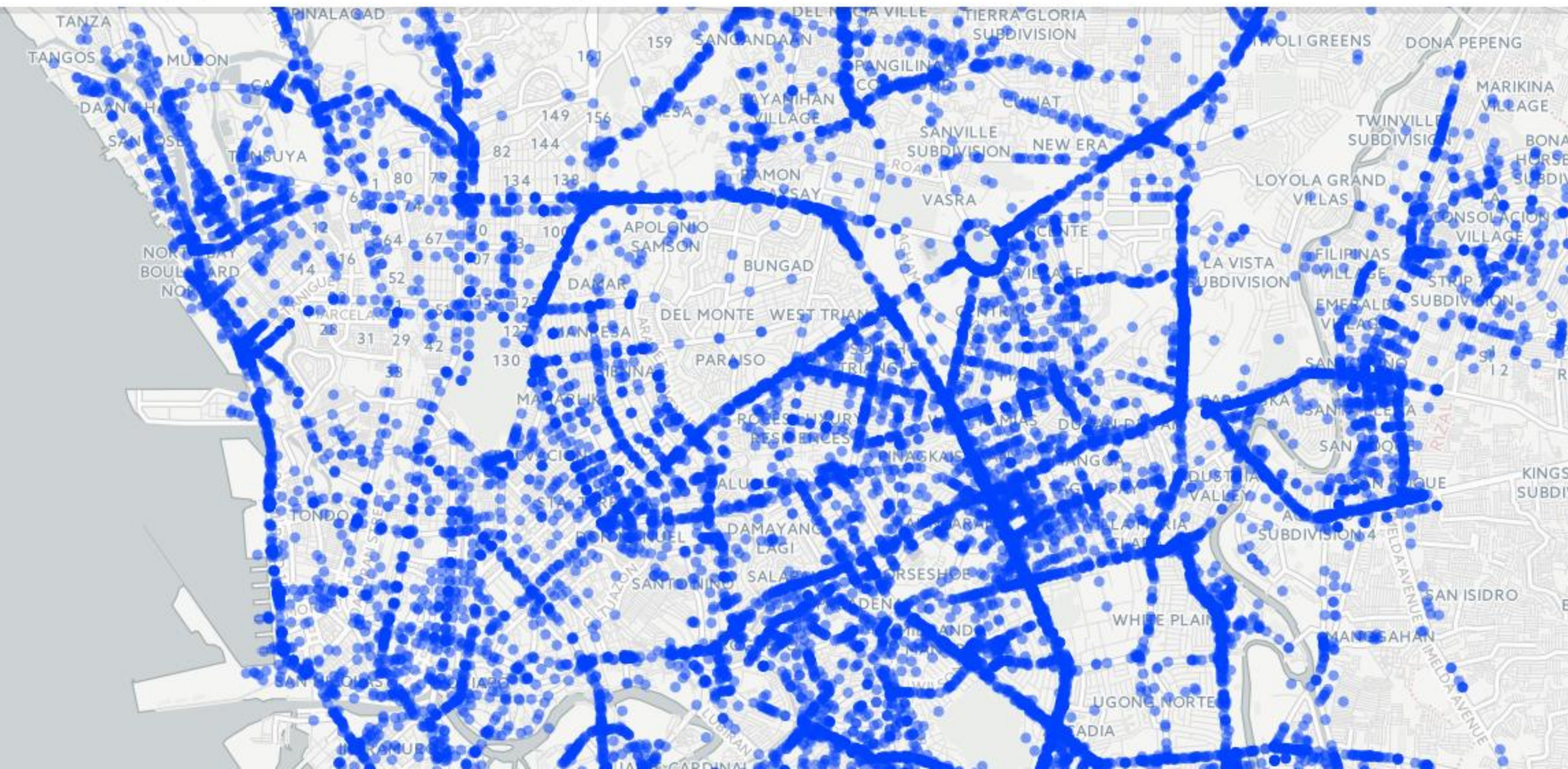
Date Range ▾

Num driver casualties ▾

Main cause ▾

Severity ▾

Collision type ▾





Filter by name, keyword

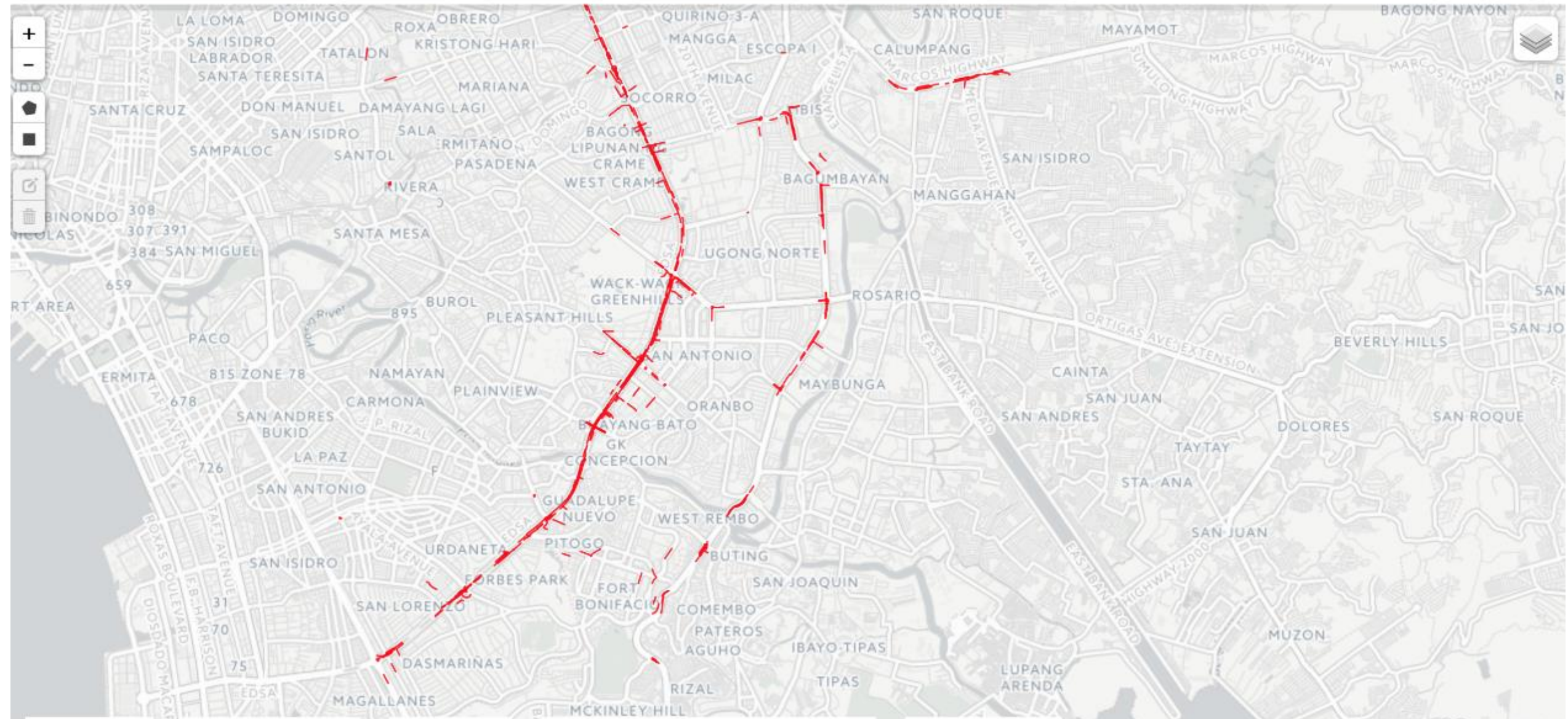
Date Range

Vehicle type

Reporting Agency

Main cause

Severity



Graphs

Interventions

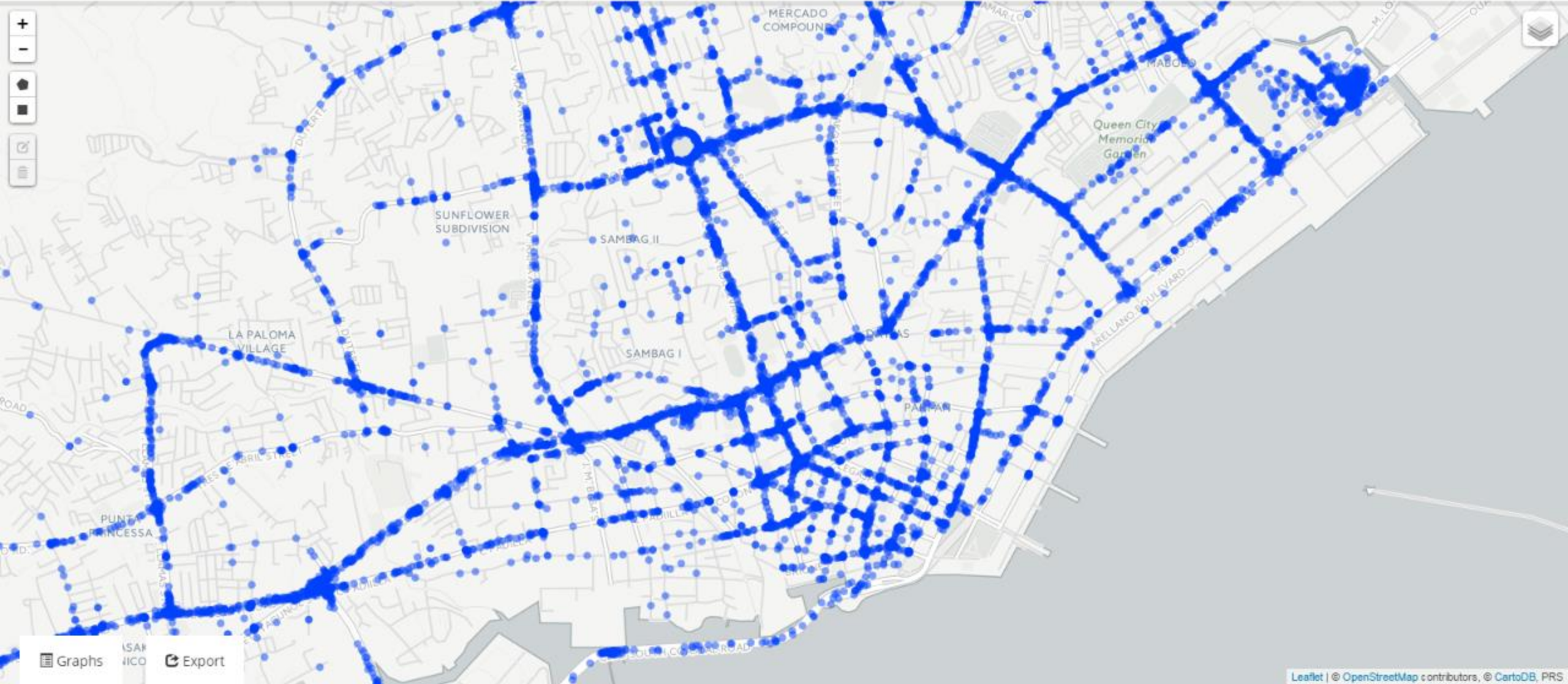
Export

Traffic Enforcement Assignments

₱340,340,000



Filter by name, keyword    Date Range ▾    Num driver casualties ▾    Main cause ▾    Severity ▾    Collision type ▾    🔍    ✕    🔄



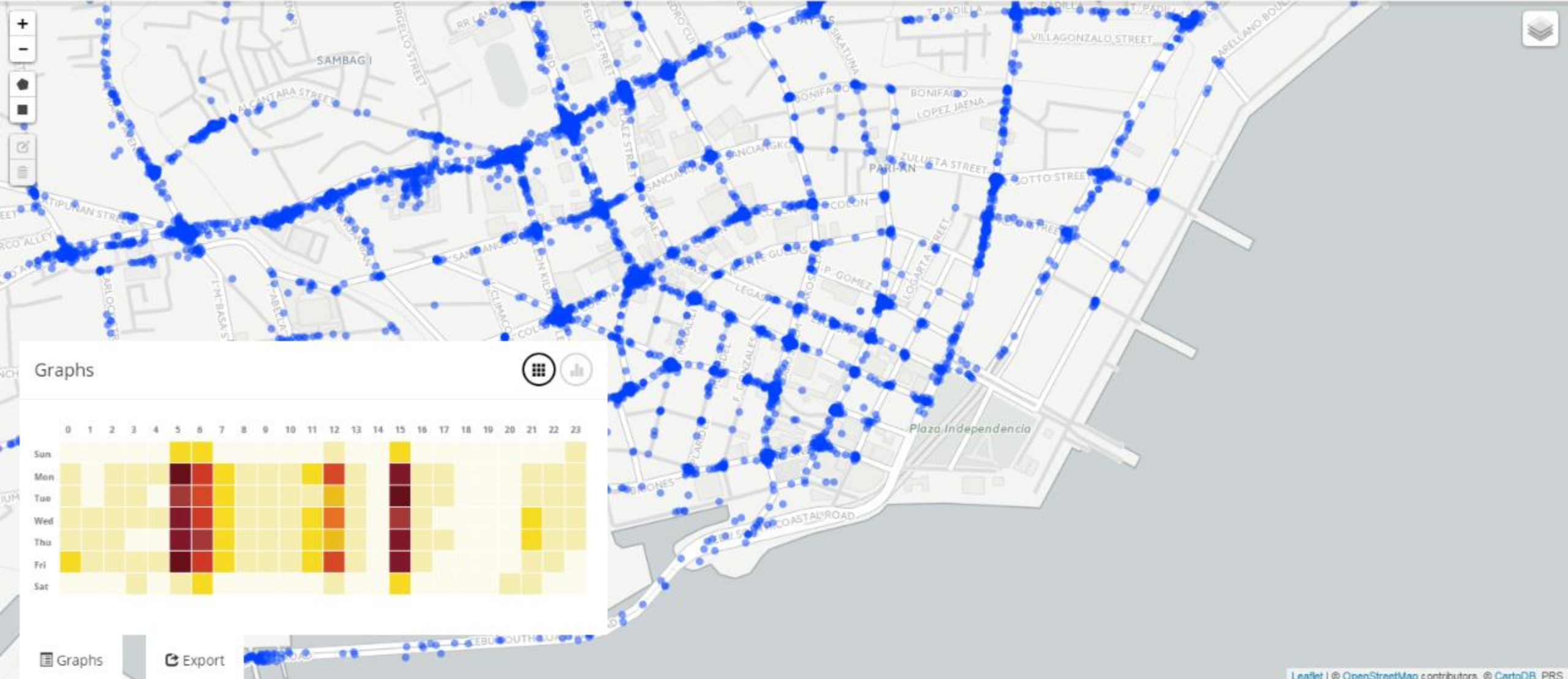


Filter by name, keyword | Date Range | Num driver casualties | Main cause | Severity | Collision type





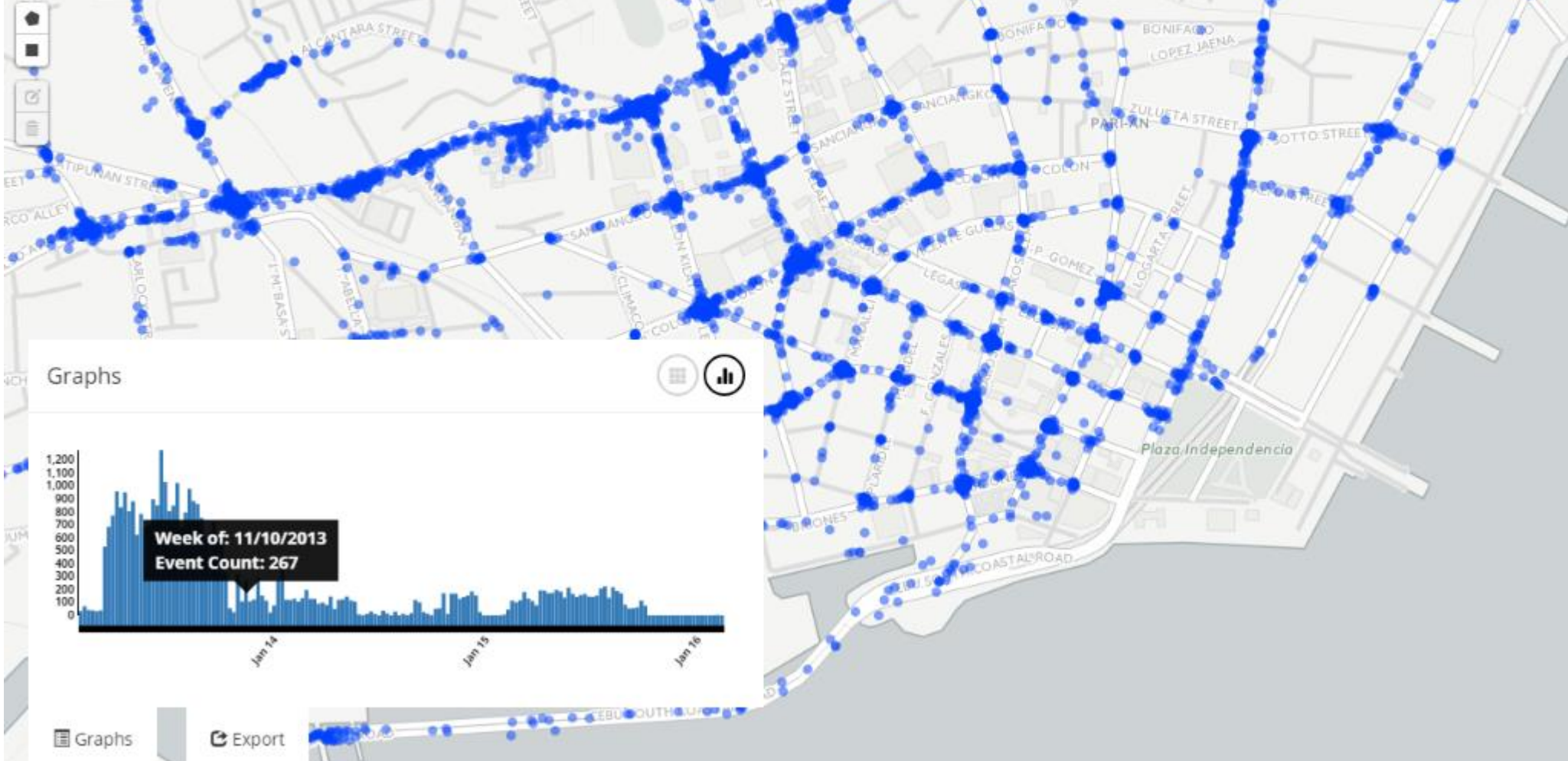
Filter by name, keyword Date Range ▾ Num driver casualties ▾ Main cause ▾ Severity ▾ Collision type ▾



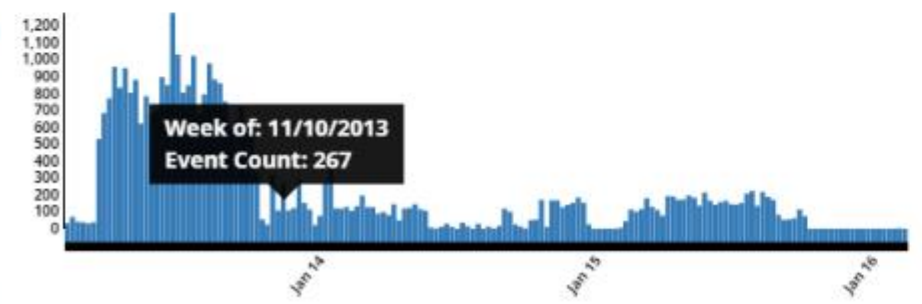
Graphs

Grid icons: [Grid] [Like]

Graphs Export



### Graphs

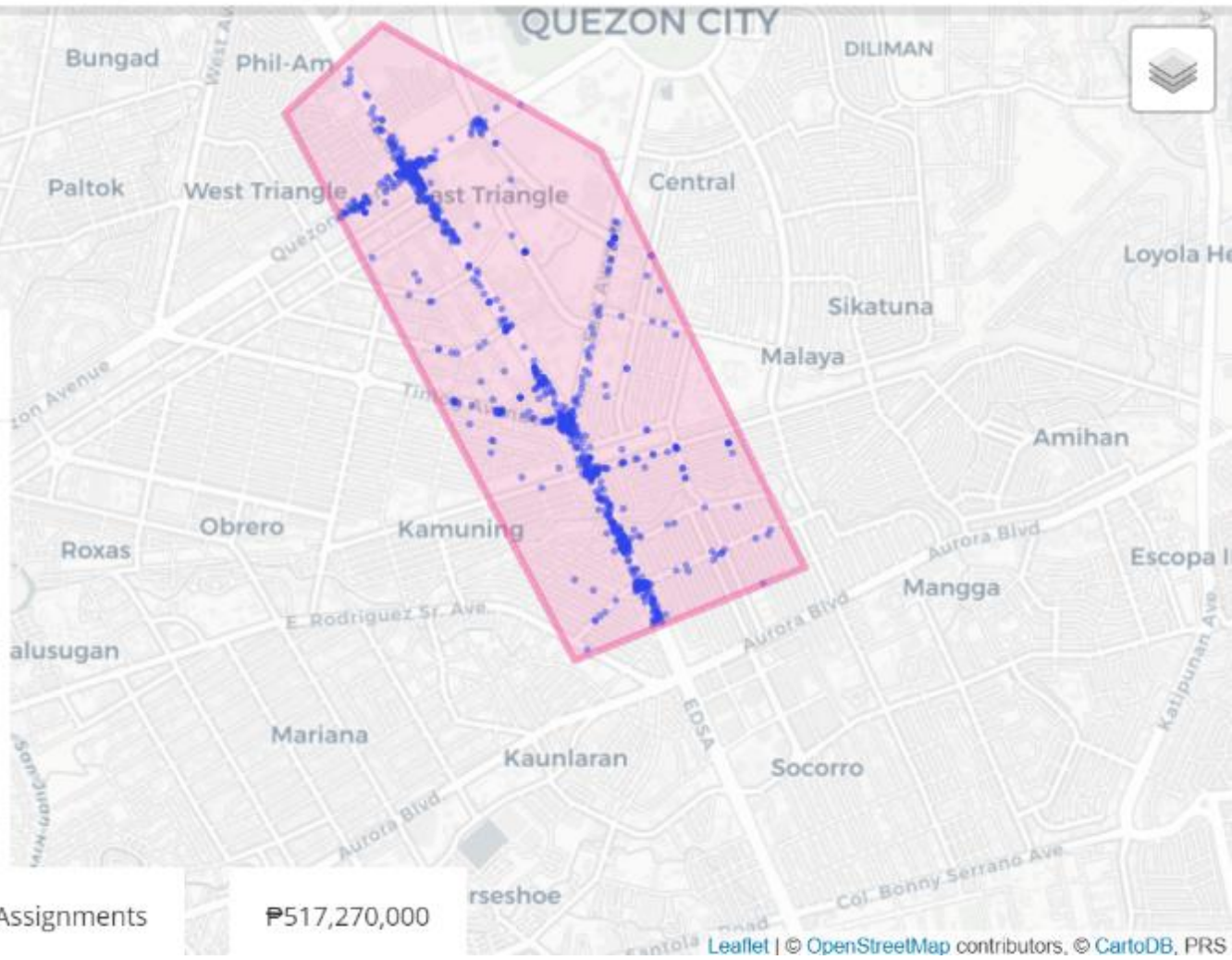


Graphs

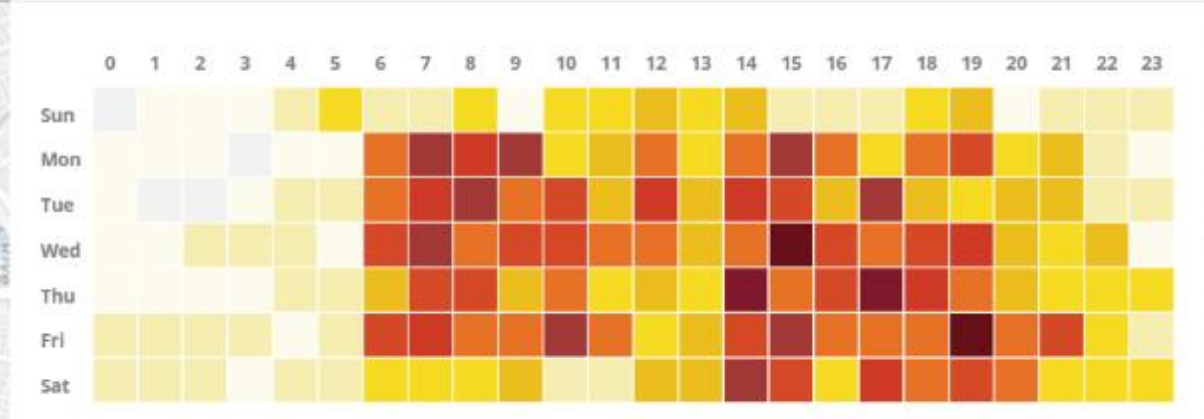
Export



Filter by name, keyword Date Range Vehicle type Reporting Agency Main cause Severity



Graphs  







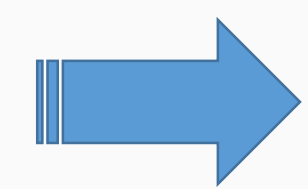
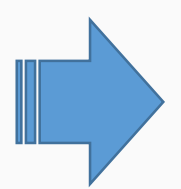
RECORD BASIC INFORMATION DETALHES DO INCIDENTE VEICULO PESSOA FOTO

<p>Occurred <b>Dec 12, 2017 17:35:39</b></p> <p>Weather <b>Hail</b></p> <p>Light <b>Night</b></p> <p><b>38.898897,-77.043308</b></p>	<p>Severidade <input checked="" type="checkbox"/> Fatal <input type="checkbox"/> Ferido <input type="checkbox"/> Propriedade</p> <p>Causa Principal <b>Erro Humano</b></p> <p>Tipo de Colisão <b>Colisão Frontal</b></p> <p>Descrição _____</p> <p>Agência Relatora <b>Unidade de Tráfego Loc..</b></p>	<p>Classificação <b>Particular</b></p> <p>Tipo de Veículo <b>Taxi</b></p> <p>Fabricante <b>Manufacturer A</b></p> <p>Número da Placa <b>BNNN9876</b></p> <p>Modelo _____</p> <p>Manobra <b>Tráfego Cruzado</b></p> <p>Danos <b>Traseira</b></p> <p>Defeito <b>Freios</b></p> <p>Carregamento <b>Sobrecarregado</b></p>	<p>Envolvimento <b>Pedestre</b></p> <p>Primeiro Nome <b>Jane</b></p> <p>Nome do Meio _____</p> <p>Sobrenome <b>Doe</b></p> <p>Endereço <b>Elmo St</b></p> <p>Sexo <b>Feminino</b></p> <p>Número da Carteira de Motorista <b>9875124</b></p> <p>Idade <b>36</b></p> <p>Erro do Motorista <b>Muito Rápido</b></p>	<p>Imagem </p> <p>Descrição _____</p> <p><b>DELETE</b> <b>SAVE</b></p>
--	---	--	---	--

NEXT

BACK

NEXT



Tap here to fill entire screen

Tap here to fill entire screen

Tap here to fill entire screen

Tap here to fill entire screen

Tap here to fill entire screen

## Potential Duplicate Records

DATE & TIME	LOCATION	DATE & TIME	LOCATION	
2/6/16 2:24 AM	231, Race Street, Chinatown, Philadelphia, Philadelphia County, Pennsylvania, 19106; 19103, United States of America	2/6/16 4:29 AM	225, Race Street, Chinatown, Philadelphia, Philadelphia County, Pennsylvania, 19106, United States of America	<a href="#">Resolve</a>
2/6/16 2:24 AM	231, Race Street, Chinatown, Philadelphia, Philadelphia County, Pennsylvania, 19106; 19103, United States of America	2/6/16 4:18 AM	231, Race Street, Chinatown, Philadelphia, Philadelphia County, Pennsylvania, 19106; 19103, United States of America	<a href="#">Resolve</a>
2/6/16 4:18 AM	231, Race Street, Chinatown, Philadelphia, Philadelphia County, Pennsylvania, 19106; 19103, United States of America	2/6/16 4:29 AM	225, Race Street, Chinatown, Philadelphia, Philadelphia County, Pennsylvania, 19106, United States of America	<a href="#">Resolve</a>

Showing results 1 - 3 of 3



### Potential Duplicate Records

DATE & TIME	LOCATION
2/6/16 2:24 AM	231, Race Street, Chinatown, Philadelphia, United States of America
2/6/16 2:24 AM	231, Race Street, Chinatown, Philadelphia, United States of America
2/6/16 4:18 AM	231, Race Street, Chinatown, Philadelphia, United States of America

### Resolve duplicate entries

SEVERITY	MAIN CAUSE	SEVERITY	MAIN CAUSE
COLLISION TYPE	DESCRIPTION	COLLISION TYPE	DESCRIPTION
	<input type="text"/>		<input type="text"/>
NUM DRIVER CASUALTIES	NUM VEHICLES	NUM DRIVER CASUALTIES	NUM VEHICLES
NUM PASSENGER CASUALTIES	NUM PEDESTRIAN CASUALTIES	NUM PASSENGER CASUALTIES	NUM PEDESTRIAN CASUALTIES
TRAFFIC CONTROL	STREET LIGHTS	TRAFFIC CONTROL	STREET LIGHTS
SURFACE CONDITION	SURFACE TYPE	SURFACE CONDITION	SURFACE TYPE

USE THIS RECORD

USE THIS RECORD

KEEP BOTH UNIQUE RECORDS

Pennsylvania, 19106, United	<a href="#">Resolve</a>
Pennsylvania, 19106; 19103,	<a href="#">Resolve</a>
Pennsylvania, 19106, United	<a href="#">Resolve</a>